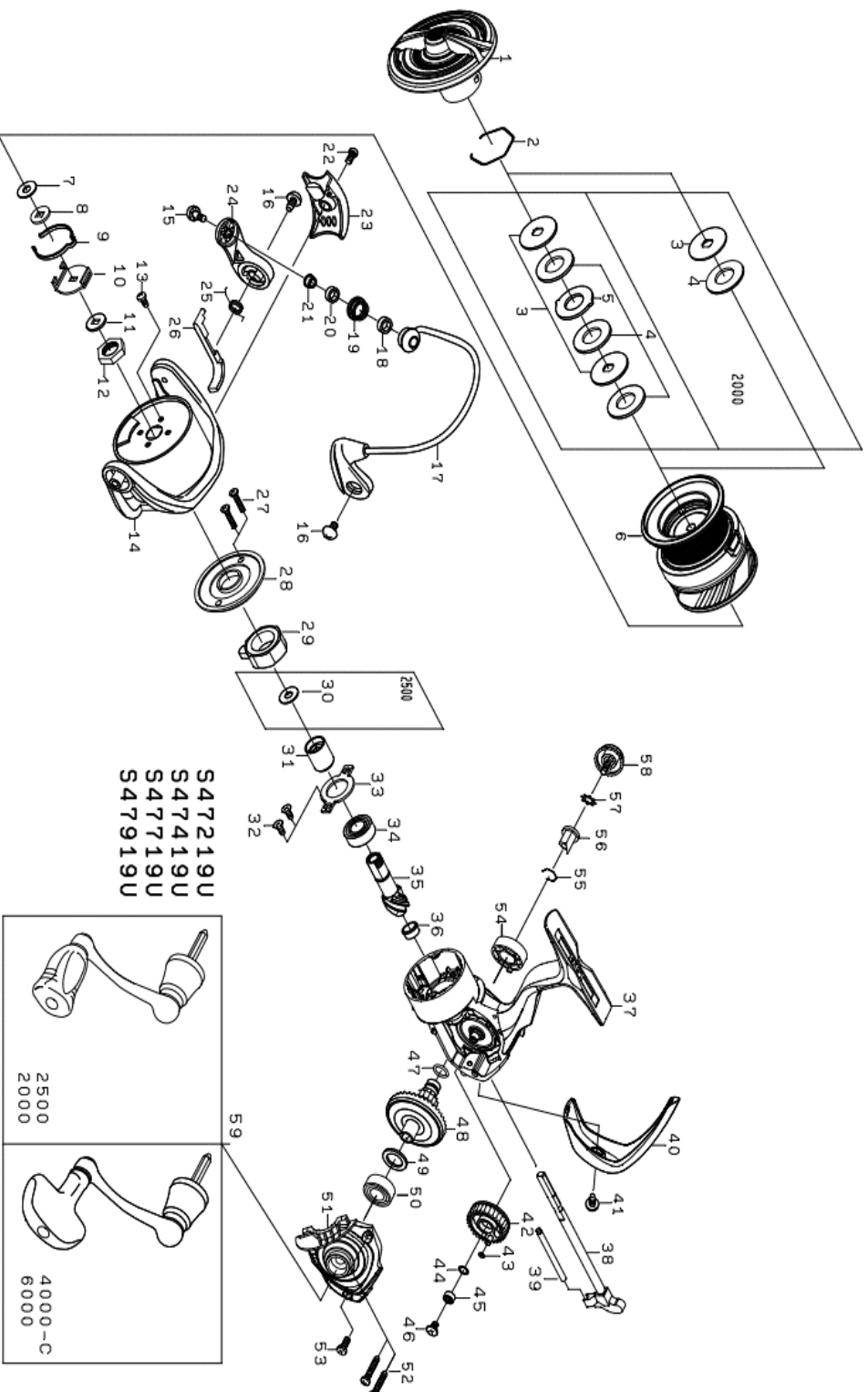




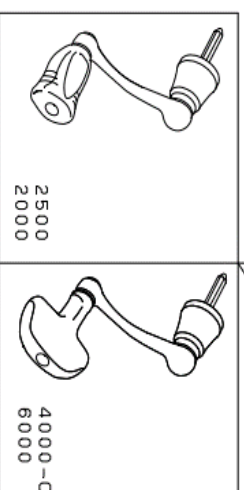
20 CROSSFIRE LT 6000

Feel Alive.

Please quote by part number, not key number when ordering.
 spares@daiwaaustralia.com.au PH: (02) 8644 8644



S47219U
 S47419U
 S47719U
 S47919U



変更	米	歴	年月日	氏名

承認	審査	審査	照査	作成
				VAN
				'19/12/25

REEL NAME	MGFT CODE	KEY NO	PARTS CODE	DESCRIPTION
20 CROSSFIRE LT 6000 4BS A		1	6Q595901	DRAG KNOB
20 CROSSFIRE LT 6000 4BS A		2	61704101	DRAG RING
20 CROSSFIRE LT 6000 4BS A		3	6J577501	DRAG DISK WASHER
20 CROSSFIRE LT 6000 4BS A		4	6J577201	DRAG WASHER
20 CROSSFIRE LT 6000 4BS A		5	6Q377601	DRAG LIP WASHER
20 CROSSFIRE LT 6000 4BS A		2*6	6Q663101	SPOOL ASSY
20 CROSSFIRE LT 6000 4BS A		7	6F050104	SPOOL WASHER (A)
20 CROSSFIRE LT 6000 4BS A		8	6Q363801	SPOOL WASHER (B)
20 CROSSFIRE LT 6000 4BS A		9	6H416101	CLICK LEAF SPRING
20 CROSSFIRE LT 6000 4BS A		10	6M021501	CLICK HOLDER
20 CROSSFIRE LT 6000 4BS A		11	6Q377501	CLICK HOLDER WASHER
20 CROSSFIRE LT 6000 4BS A		12	6G123301	ROTOR NUT
20 CROSSFIRE LT 6000 4BS A		13	6G627701	ROTOR NUT CREW
20 CROSSFIRE LT 6000 4BS A		14	6G844161	ROTOR
20 CROSSFIRE LT 6000 4BS A		15	6G195602	ROLLER SCREW
20 CROSSFIRE LT 6000 4BS A		16	6G205001	HOLDER SCREW
20 CROSSFIRE LT 6000 4BS A		17	6Q536401	BAIL
20 CROSSFIRE LT 6000 4BS A		18	6Q203401	ROLLER COLLAR (A)
20 CROSSFIRE LT 6000 4BS A		19	6F625005	LINE ROLLER
20 CROSSFIRE LT 6000 4BS A		20	6G874301	ROLLER COLLAR (B)
20 CROSSFIRE LT 6000 4BS A		21	6G152502	ROLLER COLLAR (C)
20 CROSSFIRE LT 6000 4BS A		22	6G270801	ARM LEVER SPRING COVER SC
20 CROSSFIRE LT 6000 4BS A		23	6G844303	ARM LEVER SPRING COVER
20 CROSSFIRE LT 6000 4BS A		24	6G838801	A R M LEVER
20 CROSSFIRE LT 6000 4BS A		25	6F800701	ARM LEVER SPRING
20 CROSSFIRE LT 6000 4BS A		26	6G844201	KICK LEVER
20 CROSSFIRE LT 6000 4BS A		27	6G837101	ONEWAY CLUTCH PLATE SCREW
20 CROSSFIRE LT 6000 4BS A		28	6Q206401	ONEWAY CLUTCH PLATE
20 CROSSFIRE LT 6000 4BS A		29	6J015701	ONEWAY CLUTCH
20 CROSSFIRE LT 6000 4BS A		30	---	---
20 CROSSFIRE LT 6000 4BS A		31	6Q206301	CLUTCH RING
20 CROSSFIRE LT 6000 4BS A		32	6Q195701	PINION BEARING PLATE SCREW
20 CROSSFIRE LT 6000 4BS A		33	6Q205901	PINION BEARING PLATE
20 CROSSFIRE LT 6000 4BS A		34	6H735002	PINION BALL BEARING (A)
20 CROSSFIRE LT 6000 4BS A		35	6Q586801	PINION GEAR
20 CROSSFIRE LT 6000 4BS A		36	6Q175201	PINION COLLAR
20 CROSSFIRE LT 6000 4BS A		37	6Q662901	BODY
20 CROSSFIRE LT 6000 4BS A		38	6Q536201	MAIN SHAFT
20 CROSSFIRE LT 6000 4BS A		39	6Q583803	OSCILLATING POST
20 CROSSFIRE LT 6000 4BS A		40	6Q536601	REAR CAP
20 CROSSFIRE LT 6000 4BS A		41	6G270801	REAR CAP SCREW
20 CROSSFIRE LT 6000 4BS A		42	6Q133501	OSCILLATING GEAR
20 CROSSFIRE LT 6000 4BS A		43	6B853101	OSCILLATING GEAR O-RING
20 CROSSFIRE LT 6000 4BS A		44	6G522103	OSCILLATING GEAR BEARING * W
20 CROSSFIRE LT 6000 4BS A		45	6G467105	OSCILLATING GEAR BALL BEARING
20 CROSSFIRE LT 6000 4BS A		46	6H463401	OSCILLATING GEAR SCREW
20 CROSSFIRE LT 6000 4BS A		47	6G645301	DRIVE GEAR O-RING
20 CROSSFIRE LT 6000 4BS A		48	6Q405103	DRIVE GEAR
20 CROSSFIRE LT 6000 4BS A		49	63737808	DRIVE GEAR WASHER
20 CROSSFIRE LT 6000 4BS A		50	6G523405	DRIVE BALL BEARING (A)
20 CROSSFIRE LT 6000 4BS A		51	6Q663001	BODY COVER
20 CROSSFIRE LT 6000 4BS A		52	6G115001	BODY COVER SCREW (A)
20 CROSSFIRE LT 6000 4BS A		53	6G115001	BODY COVER SCREW (B)
20 CROSSFIRE LT 6000 4BS A		54	6Q175401	DRIVE BEARING (B)
20 CROSSFIRE LT 6000 4BS A		55	6G525101	DRIVE BEARING RING
20 CROSSFIRE LT 6000 4BS A		56	6F721202	HANDLE COLLAR
20 CROSSFIRE LT 6000 4BS A		57	61608401	HANDLE WASHER
20 CROSSFIRE LT 6000 4BS A		58	6Q136101	HANDLE SCREW
20 CROSSFIRE LT 6000 4BS A		59	6Q663301	HANDLE ASSY

The image shows a blank ledger-style table with a grid of 5 columns and 30 rows. The top row is shaded grey and serves as a header. The table is designed for accounting or financial record-keeping, with the following column structure:

- Column 1:** A narrow column on the far left, typically used for recording dates.
- Column 2:** A wider column for recording descriptions or details.
- Column 3:** A narrow column for recording debit or credit amounts.
- Column 4:** A narrow column for recording the type of account or category.
- Column 5:** The widest column on the far right, typically used for recording the balance or total amount.

The grid lines are thin and consistent throughout the table, providing a clear structure for data entry.